

# Lipolami® ER

For Luxurious Textures & Skin Protection

## Identity data



### Description

- 100% natural fluid and dry soft touch esters obtained from milk thistle oil.

### Skin benefits

- Natural alternative to silicones.
- Without palm oil.
- Local milk thistle.
- Multifunctional ingredient with a cosmetic activity.
- Awesome formulation assets.

### Tested Efficacy

#### Cosmetic activity

- *Ex vivo* test: Skin barrier protection thanks to the richness in linoleic acid that reinforces cell cohesion.

#### Luxurious textures

- Sensory comparative test of textures with Lipolami® ER vs. silicones.
- High spreading ability: Low viscosity and low surface tension.

#### Formulation assets

- Stability and fineness of emulsions.
- Comparative study of sunscreens solubility.
- Dispersing properties of pigments and minerals and solubilizing properties of perfumes.

### INCI

- *Silybum Marianum Ethyl Ester.*

### Recommended usage dose

- 2 - 5% in skincare.
- 0.5 - 1.5% in foaming products.

### Applications

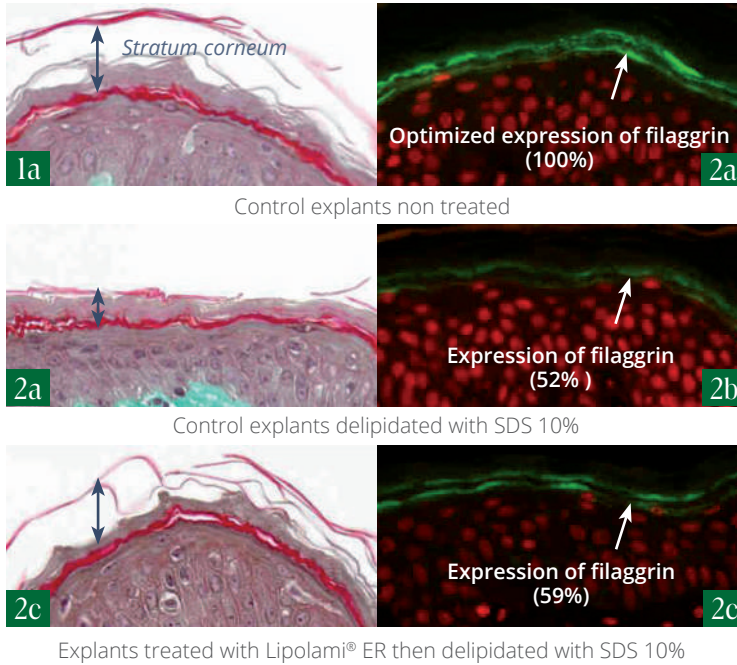
- Emulsions
- Foaming products
- Massage and beauty oils
- Natural make-up

### Standards

- COSMOS approved.

Information contained in this document is provided for information purposes only and is based on our current knowledge. The user is sole responsible of the use of our products and/or information herein. Alban Muller disclaims any warranty and any liability that may result from that use. The user shall initiate any test in order to verify and to substantiate the claims of the product placed on the market.

## 1 Cosmetic activity - *ex vivo* test - Skin barrier protection



### 1 General morphology of the skin barrier

→ Lipolami® ER when applied before an aggression by SDS\* preserves the stratum corneum from delipidation.

⇒ **Protective effect on the skin barrier thanks to its richness in omega 6 reinforcing the lipid cement**

### 2 Immunostaining study of filaggrin, skin barrier and hydration marker

→ Lipolami® ER reduces filaggrin degradation compared to delipidated explants.

⇒ **Prevention of cutaneous dryness caused by SDS\***

\*Sodium Dodecyl Sulfate

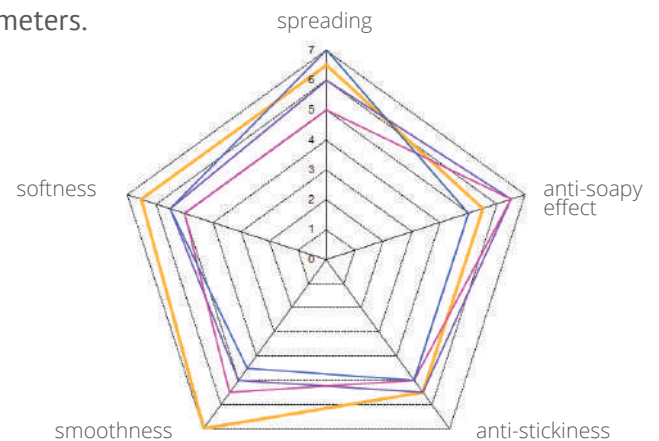
## 2 Luxurious textures - Sensory comparative test of textures

Lipolami® ER offers the best average on most parameters.

⇒ **The perfect alternative to silicones**

Legends

- Lipolami® ER
- Dimethicone
- Cyclopentasiloxane / Cyclohexasiloxane
- Dicaprylyl carbonate



## 3 Formulation assets - Stability and fineness of emulsions

The emulsion with Lipolami® ER is noticeably finer and more homogeneous than the one with sweet almond oil.

⇒ **A better stability over time and a light, pleasant skin-feel**

